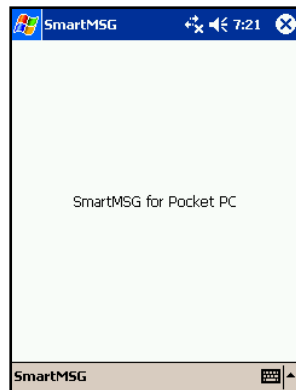


What can be done with SmartMsg from a Pocket PC?

The Pocket PC version of SmartMsg can be used to receive SmartMsg alerts and to participate in SmartMsg chat sessions.

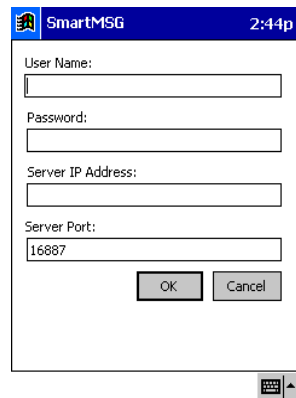
Starting the application

- Select **Programs** from the Pocket PC **Start** menu.
- Click the SmartMsg icon.
- The main menu of the Pocket PC program will appear.



Initiating a Chat Session

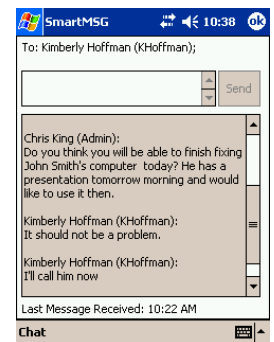
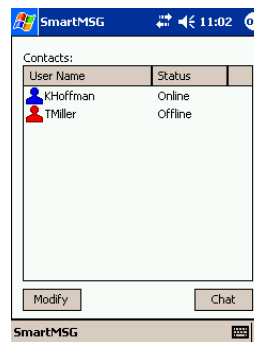
- Click on SmartMsg in the bottom task bar.
- Select **Contacts**.
- Select a Contact from the Contacts list and click the **Chat** button. (For instructions on adding a new contact, see Adding a Chat Contact.) The Chat session will appear and a chat invitation will be sent to the selected user. A message will be displayed in the chat session indicating if the other user joins or refuses the chat invitation. When the other user accepts the invitation, you will be able to enter and submit messages to the session.



Logging into SmartMsg

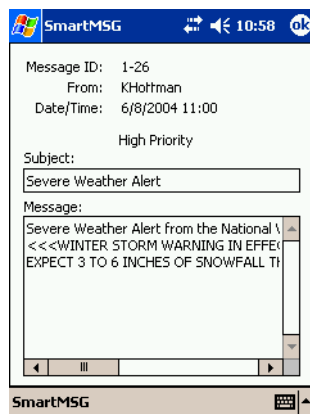
The login appears when the application is started for the first time or after you have previously logged out.

- Type in the **User Name** and **Password**.
- Enter the **Server IP Address**
- The default port is 16887. Change to match listening port of server, if necessary.



Receiving Messages

SmartMsg messages are pop-up messages to quickly get information to you on your handheld device. A SmartMsg message will appear on top of other programs running on your Pocket PC. Simply read the message and click the **OK** button located in the upper right hand corner. The message popup will then disappear and you can continue working with other programs.



Inviting an additional user to a chat session

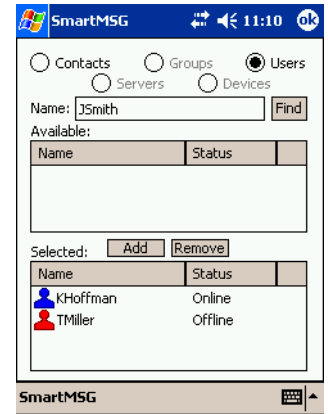
- While a chat session is open, click **Chat** at the bottom left of the screen.
- Select **Invite User** from the menu that appears.
- Select the additional user from **Contacts**, select **Add**, and then **OK** in upper-right corner.
- **-OR-**
- To select a user (that is not in Contacts), type in the name of the user, click find, tap the name of the desired user and click the add button to include it in the selected list.
- Click the **OK** button at the top of the screen.
- The Chat session will reappear and a chat invitation is sent to the user.
- The Chat session can continue while waiting for the new user to join.

Adding a Contact

- Select **Contacts** from the SmartMsg menu at the lower left hand corner of the screen.
- Click the **Modify** button.
- Select **Users** and choose the user from the Available Users list or type in the User Name, click the Find button, then tap the name of the desired user under Available:
- Click **Add**

The SmartMsg menu (lower left) is not accessible while in the Contacts screen.

Click the Ok button (top right) to return to the main screen.



The Chat Session

To: label at the top of the screen shows a list of all other participants in the chat session.

Press the **OK** button to leave the chat.

The **red dot** indicates when you are transmitting audio. Audio transmission is triggered by your Push-to-Talk button. For more information on how to set up Push-to-Talk for the Pocket PC, see the *SmartMsg Pocket PC Setup Guide*.

The top white box is where you type in your messages for the chat session.

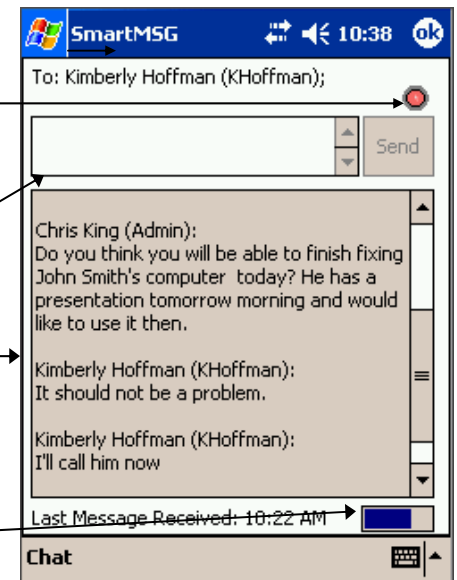
Click the **Send** button to submit text you have typed into this box.

The bottom gray box is read-only and displays all chat session activity.

An announcement appears anytime a user joins the chat session and anytime a user leaves the chat session.

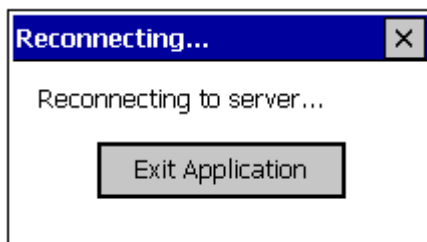
The scroll bar on the right can be used to view earlier parts of the conversation.

The blue bar here shows when you are receiving audio in the chat session.



Connections

If connection is lost between the Pocket PC and the SmartMsg server, the following message appears.



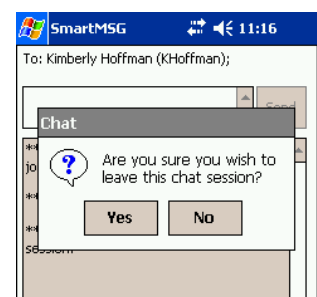
Possible reasons for lost connection:

- Wireless interference.
- Wireless device is out-of-range.
- SmartMsg server not available.

Upon reconnection, the message will disappear and you are returned to the main screen. Otherwise, you can click the **Exit** button to shutdown the application.

Leaving a Chat Session

- Click the **Chat** button on the bottom of the screen.
- Select the **Leave Chat Session** option.
- Click **Yes** to confirm.
- You will be disjoined from the Chat Session and returned to the main screen.



Shutting Down the Application

- Click **SmartMsg** at the bottom of the screen.
- Select **Exit**.

Logging Off

- Click **SmartMsg** at the bottom of the screen.
- Select **Logoff** and click **Yes** to confirm.